

Biology and Disease

Interleukin-17F (IL-17F) is a member of a group of cytokines called the IL-17 family. Other members in the family include IL-17A, IL-17B, IL-17C and IL-17E (IL-17E is also known as IL-25). IL-17F is involved in mediating pro-inflammatory responses by inducing the production of many other cytokines, chemokines, and prostaglandins from many cell types. The increased expression of chemokines attracts other cells, including neutrophils. IL-17F has many physiological functions, such as airway remodeling. As a result of these roles, the IL-17 family has been linked to many immune/autoimmune related diseases, including rheumatoid arthritis (RA), asthma, allergic responses, lupus, allograft rejection and anti-tumor immunity.

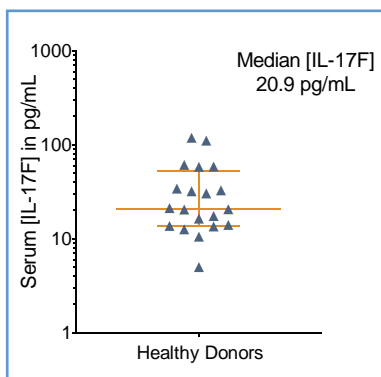
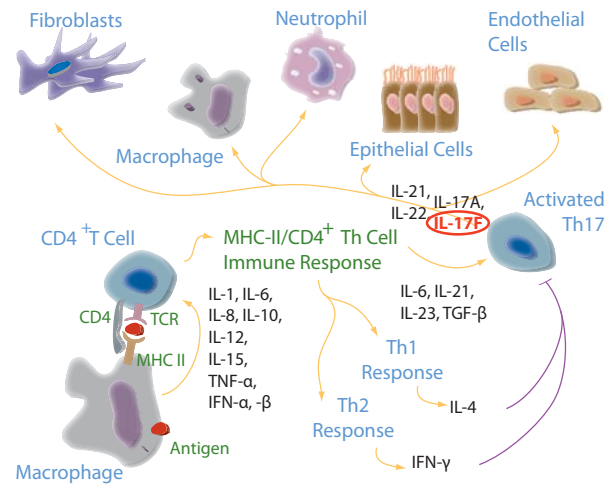


FIGURE 1: [IL-17F] in serum from 20 healthy donors, with median and interquartile range.

The Erenna® IL-17F Immunoassay Kit reliably quantifies IL-17F in serum from healthy subjects, who have a median [IL-17F] of 20.9 pg/mL that is well above the detection limit of 0.5 pg/mL.

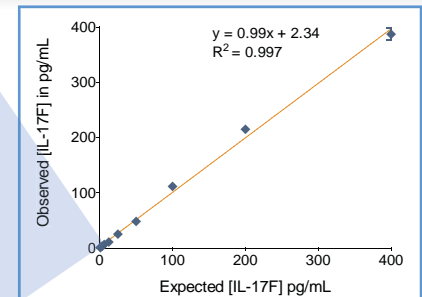
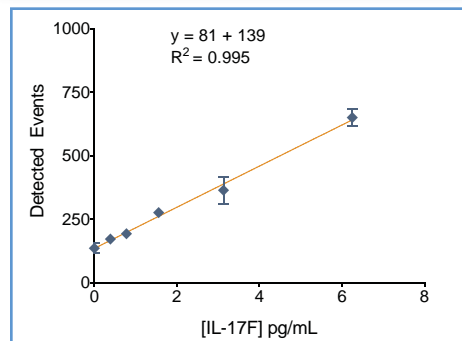


FIGURE 2: The Erenna® IL-17F Immunoassay kit low-end standard curve signal (left) and curve fit (above).

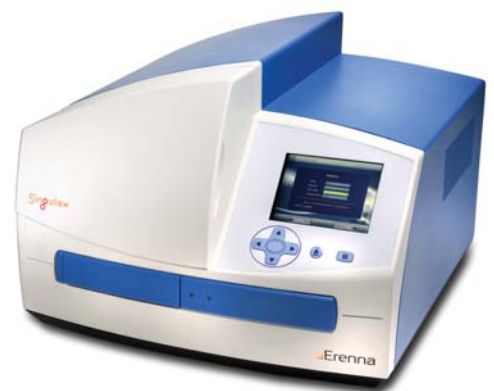
TABLE 1: Analytical sensitivity of the Erenna® IL-17F Immunoassay Kit¹

Lower Limit of Detection	0.5 pg/mL
Lower Limit of Quantification ²	1.6 pg/mL
Upper Limit of Quantification	400 pg/mL
Low-end CV% Range	2 - 21%
Low-end CV% Average	7%
Recommended Sample Volume	100 µL
Minimum Sample Volume Required ³	10 µL
Matrices Validated	human serum

¹ see product insert for updated values

² LLoQ ≤ 20% CV and ± 20% recovery

³ based upon median [IL-17F] in a healthy reference population



Representative data shown for demonstration purposes only. Individual results may vary depending upon samples tested and protocol used.