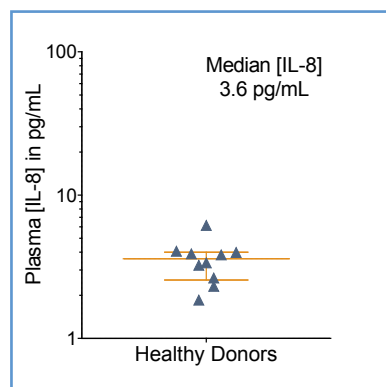
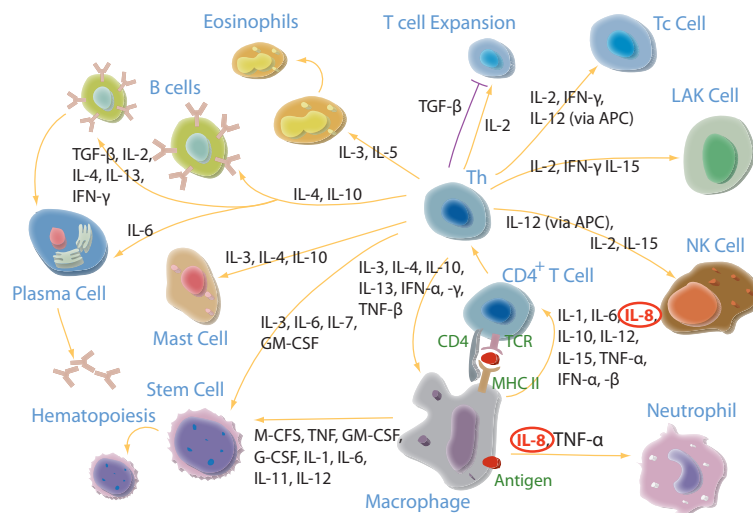


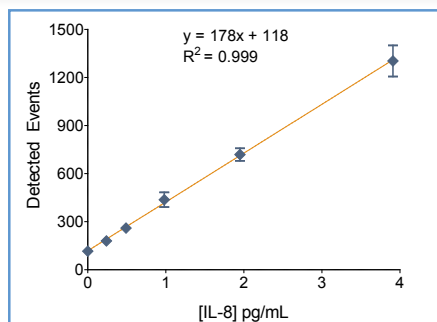
## Biology and Disease

Interleukin-8 (IL-8) is a CXC chemokine synthesized by many cell types, including macrophages, epithelial cells and endothelial cells in response to a pathogen or inflammatory stimulus. IL-8 functions as a chemotactic factor that attracts neutrophils, basophils, and T-cells. IL-8 is one of the major mediators of the inflammatory response and of innate immunity. Its function is to recruit neutrophils to phagocytose the foreign antigen. IL-8 is also a potent angiogenic factor that induces neutrophils to leave the bloodstream and enter into the surrounding tissue. IL-8 has been shown to have roles in the pathological angiogenesis that is associated with solid tumors, diabetic retinopathy, and rheumatoid arthritis (RA).

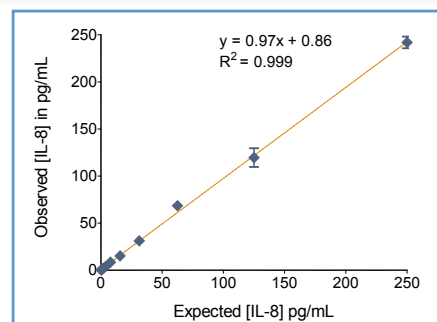


**FIGURE 1:** [IL-8] in EDTA plasma from 10 healthy donors, with median and interquartile range.

The Erenna® IL-8 Immunoassay Kit reliably quantifies IL-8 in EDTA plasma from healthy subjects, who have a median [IL-8] of 3.6 pg/mL that is well above the detection limit of 0.07 pg/mL.



**FIGURE 2:** The Erenna® IL-8 CXCL8 Immunoassay Kit low-end standard curve.



**FIGURE 3:** The Erenna® IL-8 CXCL8 Immunoassay Kit correlation curve.

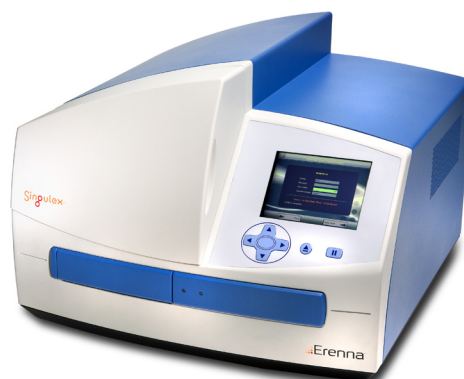
**TABLE 1:** Analytical sensitivity of the Erenna® IL-8 Immunoassay Kit<sup>1</sup>

Lower Limit of Detection	0.07 pg/mL
Lower Limit of Quantification <sup>2</sup>	0.49 pg/mL
Upper Limit of Quantification	250 pg/mL
Low-end CV% Range	6 - 18%
Low-end CV% Average	12%
Recommended Sample Volume	50 µL
Minimum Sample Volume Required <sup>3</sup>	10 µL
Matrices Validated	human serum and EDTA plasma

<sup>1</sup> see product insert for updated values

<sup>2</sup> LLoQ ≤ 20% CV and ± 20% recovery

<sup>3</sup> based upon median [IL-8] in a healthy reference population



Representative data shown for demonstration purposes only. Individual results may vary depending upon samples tested and protocol used.