

Biology and Disease

Interleukin-5 (IL-5) is a cytokine secreted mainly by T-cells and mast cells upon stimulation with antigens and allergens. It has pleiotropic effects toward B-cells and is involved in the production of immunoglobulins. More importantly, IL-5 acts in synergy with GM-CSF to govern the proliferation and maturation of eosinophils. A pronounced level of eosinophils is commonly associated with the development of allergic conditions such as asthma, eosinophilic esophagitis and hypereosinophilic syndrome. As such, IL-5 is highly regarded as a crucial mediator of the inflammatory pathway concerning allergic reactions. Current studies suggest that IL-5 blockade is a promising intervention for the treatment of allergic diseases.

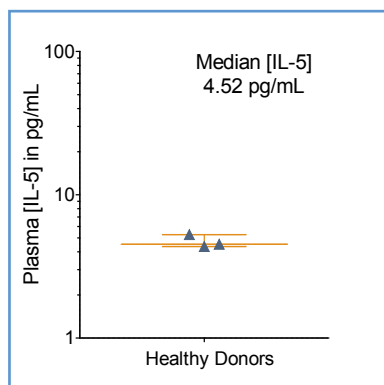
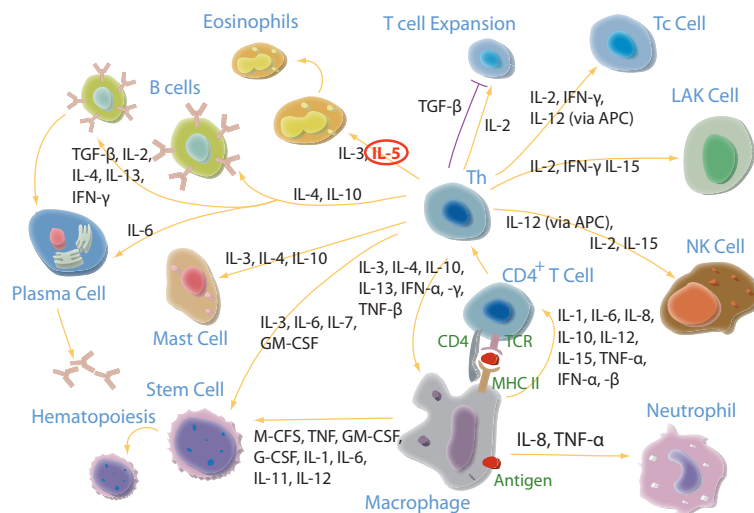


FIGURE 1: [IL-5] in EDTA plasma from 10 healthy donors (7 samples < LLOQ), with median and interquartile range.

The Erenna® IL-5 Immunoassay Kit can quantify IL-5 in EDTA plasma from healthy subjects, who have a median [IL-5] of 4.52 pg/mL that is above the detection limit of 0.17 pg/mL.

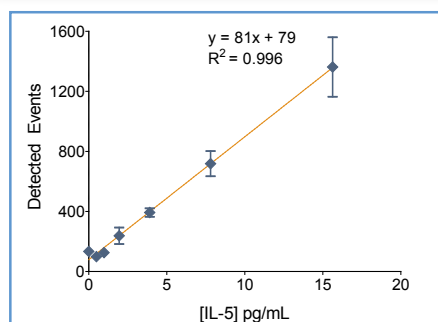


FIGURE 2: The Erenna® IL-5 Immunoassay Kit low-end standard curve.

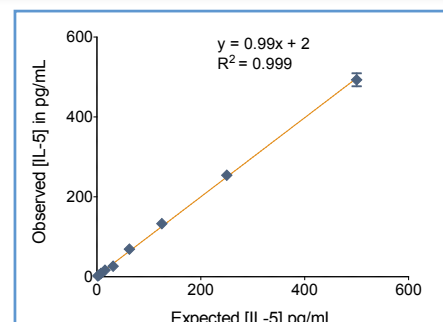


FIGURE 3: The Erenna® IL-5 Immunoassay Kit correlation curve.

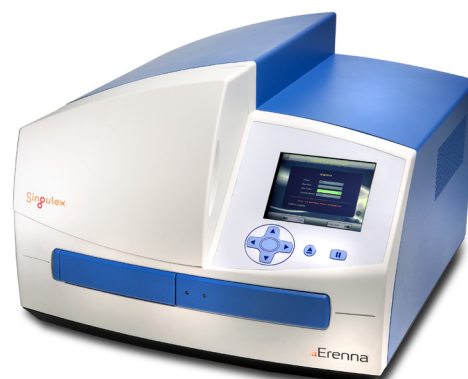
TABLE 1: Analytical sensitivity of the Erenna® IL-5 Immunoassay Kit¹

Lower Limit of Detection	0.17 pg/mL
Lower Limit of Quantification ²	3.91 pg/mL
Upper Limit of Quantification	500 pg/mL
Low-end CV% Range	4 - 13%
Low-end CV% Average	9%
Assay Volume	100 µL
Minimum Sample Volume Required ³	100 µL
Matrices Verified	human EDTA plasma

¹ see product insert for updated values

² LLOQ ≤ 20% CV and ± 20% recovery

³ based upon median [IL-5] in a healthy reference population



Representative data shown for demonstration purposes only. Individual results may vary depending upon samples tested and protocol used.