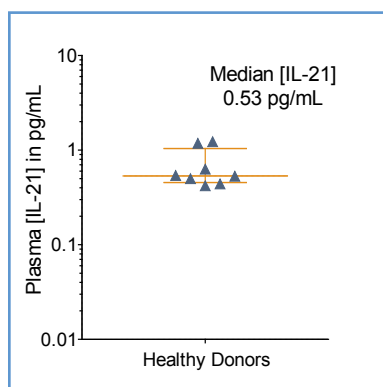
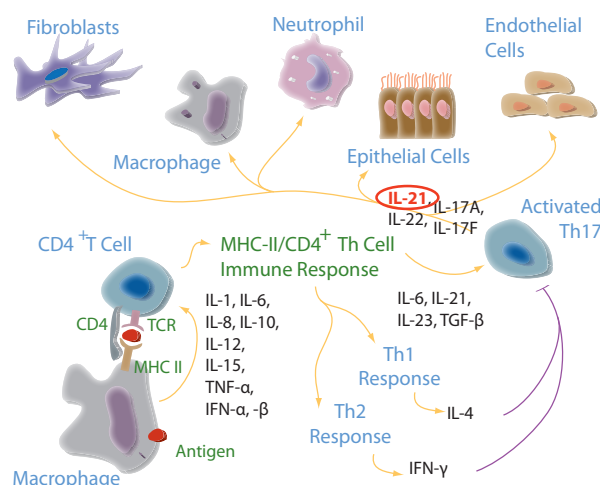


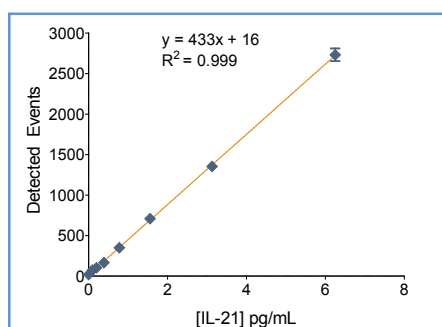
## Biology and Disease

Interleukin-21 (IL-21) is a cytokine with a potent regulatory effect on the immune system. Mainly produced by activated T-cells, IL-21 is responsible for the hematopoiesis of T-, B-, natural killer and dendritic cells. The production and differentiation of these effector cells may lead to an increased immunity against cancerous or virally infected cells. Thus, the role of IL-21 in the regulation of immuno-inflammatory responses has important implications for diseases such as multiple sclerosis, metastatic melanoma and metastatic renal cell carcinoma. Thus IL-21 will remain an attractive subject for drug development. Successful study outcomes will further establish IL-21 immunotherapy as an effective treatment for various cancers and inflammatory diseases.

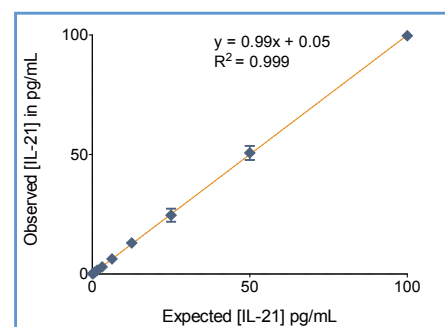


**FIGURE 1:** [IL-21] in serum from 19 healthy donors, (11 samples < LLoQ), with median and interquartile range.

The Erenna® IL-21 Immunoassay Kit can quantify IL-21 in serum from healthy subjects, who have a median [IL-21] of 0.53 pg/mL that is well above the detection limit of 0.005 pg/mL.



**FIGURE 2:** The Erenna® IL-21 Immunoassay Kit low-end standard curve.



**FIGURE 3:** The Erenna® IL-21 Immunoassay Kit correlation curve.

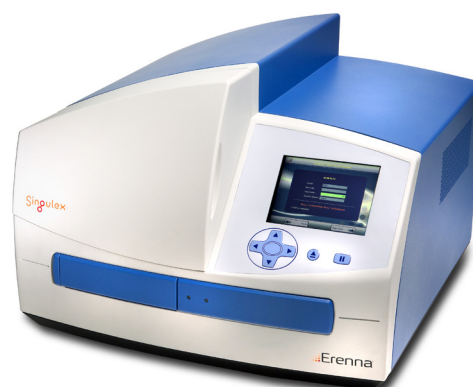
**TABLE 1:** Analytical sensitivity of the Erenna® IL-21 Immunoassay Kit<sup>1</sup>

Lower Limit of Detection	0.005 pg/mL
Lower Limit of Quantification <sup>2</sup>	0.2 pg/mL
Upper Limit of Quantification	100 pg/mL
Low-end CV% Range	1 - 11%
Low-end CV% Average	7%
Recommend Sample Volume	50 µL
Minimum Sample Volume Required <sup>3</sup>	50 µL
Matrices Verified	human serum

<sup>1</sup> see product insert for updated values

<sup>2</sup> LLoQ ≤ 20% CV and ± 20% recovery

<sup>3</sup> based upon median [IL-21] in a healthy reference population



Representative data shown for demonstration purposes only. Individual results may vary depending upon samples tested and protocol used.