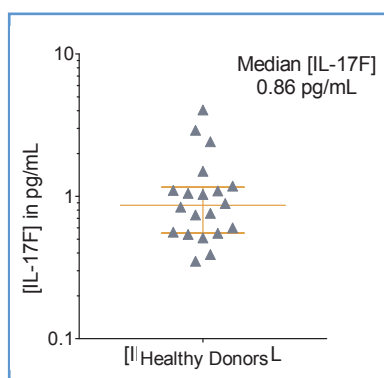
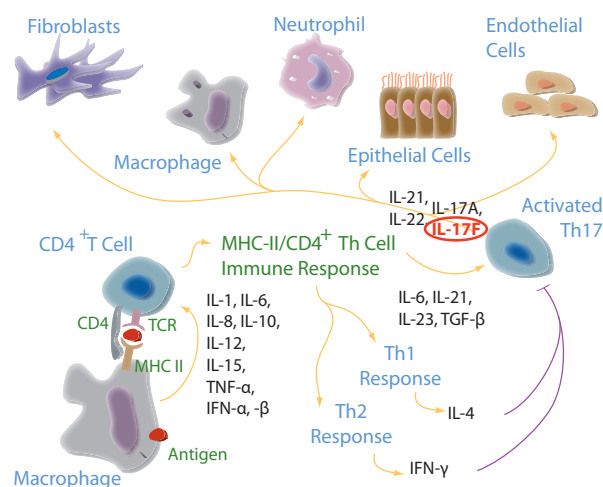


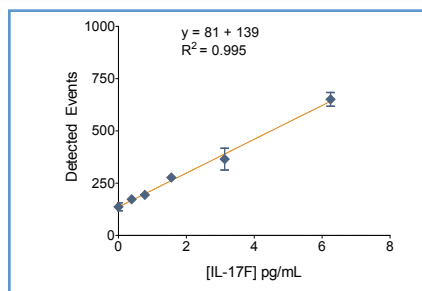
## Biology and Disease

Interleukin-17F (IL-17F) is a member of a group of cytokines called the IL-17 family. Other members in the family include IL-17A, IL-17B, IL-17C and IL-17E (IL-17E is also known as IL-25). IL-17F is involved in mediating pro-inflammatory responses by inducing the production of many other cytokines, chemokines, and prostaglandins from many cell types. The increased expression of chemokines attracts other cells, including neutrophils. IL-17F has many physiological functions, such as airway remodeling. As a result of these roles, the IL-17 family has been linked to many immune/autoimmune related diseases, including rheumatoid arthritis (RA), asthma, allergic responses, lupus, allograft rejection and anti-tumor immunity.

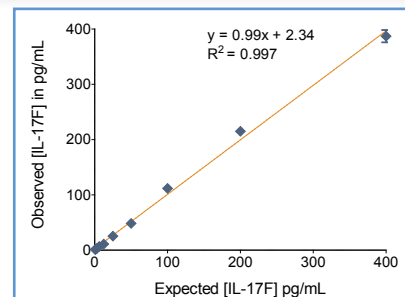


**FIGURE 1:** [IL-17F] in serum and plasma from 20 donors, with median and interquartile range.

The Erenna® IL-17F Immunoassay Kit reliably quantifies endogenous levels of IL-17F in serum or EDTA plasma with a median [IL-17F] of 0.86 pg/mL that is well above the detection limit of 0.2 pg/mL.



**FIGURE 2:** Erenna® IL-17A (V2) Immunoassay Kit low-end standard curve signal



**FIGURE 3:** The Erenna® IL-17A (V2) Immunoassay kit full length correlation curve

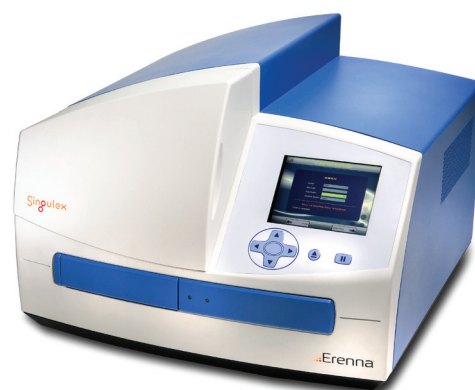
**TABLE 1:** Analytical sensitivity of the Erenna® IL-17F Immunoassay Kit<sup>1</sup>

Lower Limit of Detection	0.08 pg/mL
Lower Limit of Quantification <sup>2</sup>	0.2 pg/mL
Upper Limit of Quantification	100 pg/mL
Low-end CV% Range	3-7%
Low-end CV% Average	5%
Recommended Sample Volume	50 µL
Minimum Sample Volume Required <sup>3</sup>	50 µL
Matrices Verified	human serum/ EDTA plasma

<sup>1</sup> see product insert for updated values

<sup>2</sup> LLoQ ≤ 20% CV and ± 20% recovery

<sup>3</sup> based upon median [IL-17F] in a healthy reference population



Representative data shown for demonstration purposes only. Individual results may vary depending upon samples tested and protocol used.