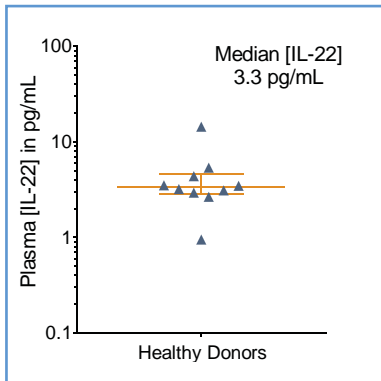
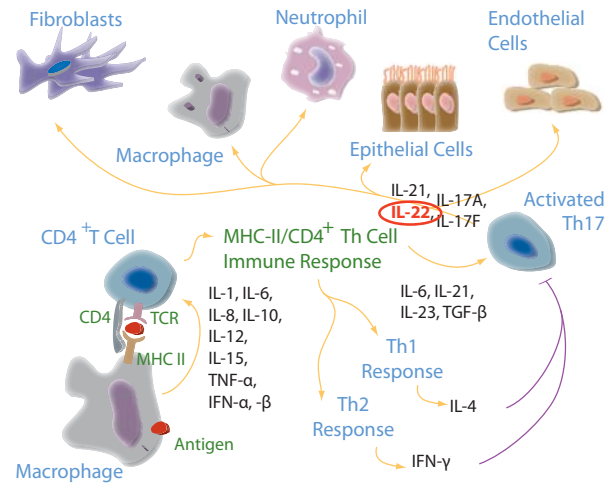


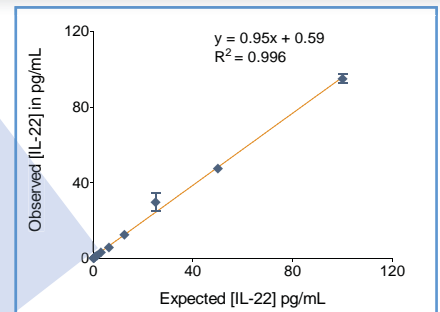
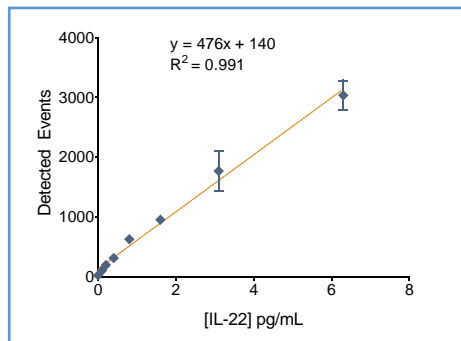
**Biology and Disease**

Interleukin-22 (IL-22), also known as IL-10-related T-cell-derived inducible factor (IL-TIF), is a member of the IL-10 cytokine family. Mainly produced by activated T-cells and natural killer cells, IL-22 binds to a receptor complex with two components, CRF2-4 and IL-22R. The signaling cascade is said to up-regulate pro-inflammatory cytokines and antimicrobial peptides, and induce production of acute-phase reactants in liver and hepatoma cells. The biological function of IL-22 is associated with many inflammatory disorders, including Crohn's disease, inflammatory bowel disease, psoriasis, rheumatoid arthritis and ulcerative colitis. Thus, IL-22 remains an attractive therapeutic target because of its pro-inflammatory properties.



**FIGURE 1:** [IL-22] in EDTA plasma from 10 healthy donors, with median and interquartile range.

The Erenna® IL-22 Immunoassay Kit reliably quantifies IL-22 in healthy subjects, who have a median [IL-22] of 3.3 pg/mL that is well above the detection limit of 0.024 pg/mL.



**FIGURE 2:** The Erenna® IL-22 Immunoassay Kit low-end standard curve signal (left) and curve fit (above).

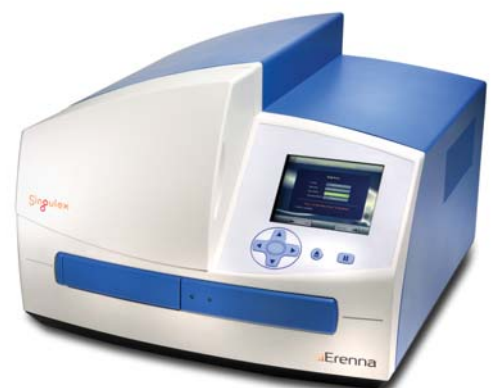
**TABLE 1:** Analytical sensitivity of the Erenna® IL-22 Immunoassay Kit<sup>1</sup>

Lower Limit of Detection	0.024 pg/mL
Lower Limit of Quantification <sup>2</sup>	0.2 pg/mL
Upper Limit of Quantification	100 pg/mL
Low-end CV% Range	2 - 20%
Low-end CV% Average	11%
Assay Volume	100 µL
Minimum Sample Volume Required <sup>3</sup>	10 µL

<sup>1</sup> see product insert for updated values

<sup>2</sup> LLoQ ≤ 20% CV and ± 20% recovery

<sup>3</sup> based upon median [IL-22] in a healthy reference population



Representative data shown for demonstration purposes only. Individual results may vary depending upon samples tested and protocol used.