

Biology and Disease

Interleukin-17A (IL-17A) is the founding member of a group of cytokines called the IL-17 family. There are several members of the IL-17 family, from IL-17A to IL-17F (IL-17E is also called IL-25). IL-17A is involved in mediating pro-inflammatory responses by inducing the production of many other cytokines, chemokines, and prostaglandins from many cell types. The increased expression of chemokines attracts other cells, including neutrophils. IL-17A has many physiological functions, such as airway remodeling. As a result of these roles, the IL-17 family has been linked to many immune/autoimmune related diseases, including rheumatoid arthritis (RA), asthma, allergic responses, lupus, allograft rejection and anti-tumor immunity.

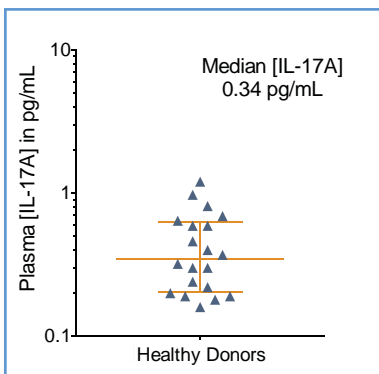
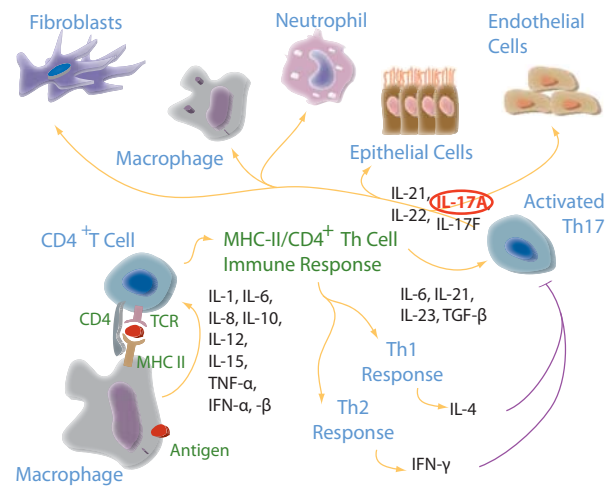


FIGURE 1: [IL-17A] in EDTA plasma from 20 healthy donors, with median and interquartile range.

The Erenna® IL-17A Immunoassay Kit reliably quantifies IL-17A in EDTA plasma from healthy subjects, who have a median [IL-17A] of 0.34 pg/mL that is well above the detection limit of 0.01 pg/mL.

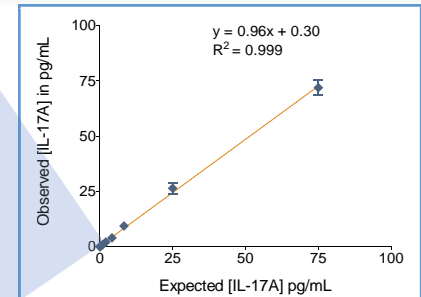
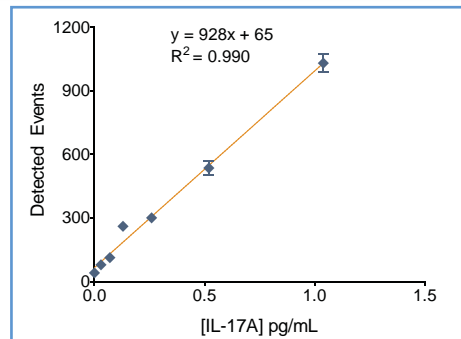


FIGURE 2: The Erenna® IL-17A Immunoassay kit low-end standard curve signal (left) and curve fit (above).

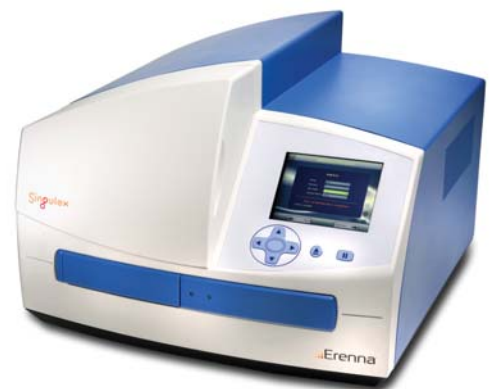
TABLE 1: Analytical sensitivity of the Erenna® IL-17A Immunoassay Kit¹

Lower Limit of Detection	0.01 pg/mL
Lower Limit of Quantification ²	0.13 pg/mL
Upper Limit of Quantification	75 pg/mL
Low-end CV% Range	5 - 7%
Low-end CV% Average	6%
Recommended Sample Volume	100 µL
Minimum Sample Volume Required ³	50 µL
Matrices Verified	human serum/ EDTA plasma

¹ see product insert for updated values

² LLoQ ≤ 20% CV and ± 20% recovery

³ based upon median [IL-17A] in a healthy reference population



Representative data shown for demonstration purposes only. Individual results may vary depending upon samples tested and protocol used.